

How do you find your way in Palazzo Campana.

There are many ways to go to the first and second floor. Unless you have an excellent sense of direction, only use the stairs in front of the main entrance.

Ground floor.

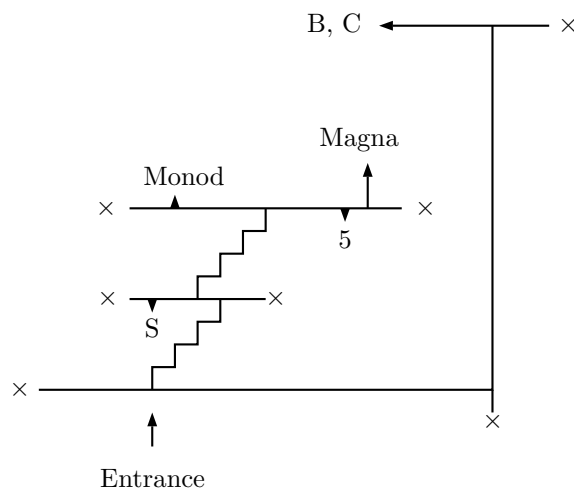
Aula B (a.k.a. aula Spallanzani) and aula C are in a complex in the yard of the main building.

First floor (a.k.a. piano nobile).

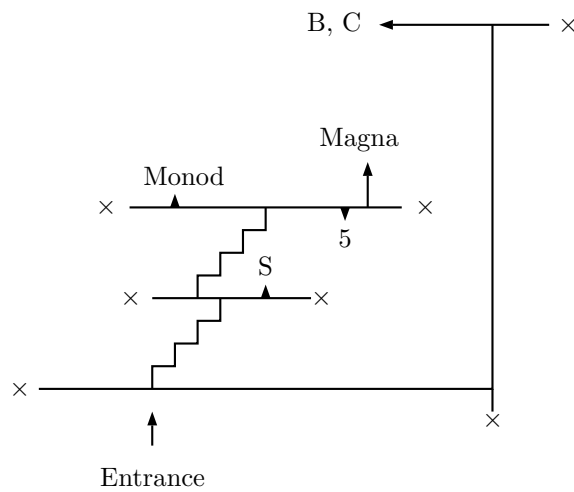
Aula S.

Second floor.

Aula Monod, aula 5, and aula Magna (which isn't as big as its name suggests).



An artist's representation of Palazzo Campana



Another artist's representation of Palazzo Campana